



"Bringing Creativity to the Community"



## A Look Back....



Our 4th Annual Summer Academy has begun!

Eg2 kicked off our summer last week with Drawing & Illustration. It was so amazing seeing all of the smiling faces in our new space and we are excited for all the fun the rest of the summer has in store.

There are still spots available in our Printmaking week (July 10 - 13th) and

Sewing & Design Week (July 17th - 20th). You can follow our [Facebook Page](#) for current promotions and special prices as the summer continues.

[For More Information Check Out Our Academy Page](#)



## Scholastic National Ceremony and Affiliate Conference

Last week two of our employees headed up to New York for the Scholastic Affiliate Conference, National Ceremony and Gold Medal Galleries at the Pratt Institute and Parsons School of Design. They learned a great deal about the 2017 awards, including common themes found throughout the national winning works, and what will be coming up next for the 2018 awards process.

Check out the trending hashtag [#GoldKey](#) to see photos and video from everyone that attended the National events.

The Launch of the 2018 Scholastic Art & Writing Awards is September 14th. Check back with us in the upcoming months to find out more about deadlines, upcoming events and more!

[For More Information Check Out Our Scholastic Awards Page](#)



Thanks to all of you who donated during

## the Great Give!

We raised over \$400 that will go towards funding our scholarship students and purchasing supplies for the Summer Academy. Everything counts as a small non-profit and we appreciate all of the support from those of you who donate your time, money and support!

## Upcoming Events and Programs...

### Figure Drawing

The first scheduled figure drawing session this summer will take place on:

**June 23rd from 12 -2 pm**

This is a clothed session open to all ages! The cost is \$15 which includes the model fee and all supplies. If you are interested in attending please follow the link below to fill out our registration form. If you have already signed up for a previous session, let us know via phone or email if you would like to attend.



[Click here to go to our Figure Drawing Page](#)

### Pop-up Gallery Coming Soon...

# CITYPLACE

CityPlace has been kind enough to donate a gallery space to us for the next three months! We will be located next to Anthropologie and will be featuring the past 7 years of CityPlace Artwall prints AND the 2017 Catwalk designs as our first exhibition. Please stay tuned for gallery hours, opening events and much more!

We will need adults or students entering their senior year of high school to volunteer with us during this process. Internships may be available to college students, If you are interested please email [Lindsey@egsquared.org](mailto:Lindsey@egsquared.org)

[For More Information About Our Galleries Click Here](#)

## Stay Informed...



### Fall Programming is in the works...

As the summer progresses we are working diligently on creating new, exciting classes and events for our students. If you have any recommendations on what you would like Eg2

to offer please feel free to let us know. Stay tuned in onto our website and Facebook page for more updates and information.

[For More Information About Our Academy Click Here](#)

Gallery will be CLOSED on the following dates:

**Monday, July 3rd - Friday, July 7th**  
*(Summer Camp and Main Gallery will be closed)*

**Main Gallery Summer Hours**

**Monday - Thursday, 8:30am - 4:30pm**  
**Friday, Closed to Public**

**CityPlace Pop-Up Gallery Summer Hours**

**To Be Announced**

[For More Hours of Operation Please Click Here](#)



## **Volunteers Always Needed!**

Eg2 is always seeking volunteers to help us get ready for upcoming programs. Tasks will include helping out with classes, setting up exhibitions, and other odds and ends we just don't have time to complete. Volunteers must give at least a days notice before coming in, so we can plan accordingly.

[Click here to Volunteer at Eg2](#)

Educational Gallery Group | (561) 355-5276 | [Contact Us](#) | [Egsquared.org](#)



"Bringing Creativity to the Community"

## July Newsletter



### A Look Back....



Students learning how to draw trees for a larger project during our Painting week

### Summer Academy Session A!

The first four weeks of the Academy have come to an end and it was so great seeing all the new and returning faces! During session A, students tackled vital drawing techniques, painting in a variety of styles, using unconventional materials to create mixed media masterpieces and how to create sculptures from items like doll-parts and paper. Swing by our [CityPlace Pop-up gallery](#) this summer to see some of the amazing works created by our students.

There are still spots available in our Printmaking week (July 10 - 13th) and Sewing & Design Week (July 17th - 20th). You can follow our [Facebook Page](#) for current promotions and special prices as the summer continues.



### Eg2 Pop-Up Gallery @ CityPlace

Our newest Gallery space is now open! Come by the storefront next to Anthropologie to see our current exhibition of past CityPlace ArtWall prints and the 2017 Catwalk Designs. We also have student prints available for purchase where a portion of the proceeds raised will be going directly back to the student artists AND a raffle that you can enter to win one of the large-scale, weather-proof CityPlace prints!

#### Hours of Operation:

Monday-Friday, 4-7pm

Saturday, 4-8pm

Sunday, 3-6pm

[For More Information Check Out Our Gallery Page](#)

## Upcoming Events and Programs...

### Figure Drawing

July 24th from 4-6pm at CityPlace

This is a clothed session open to all ages! The cost is \$15 which includes the model fee and all supplies. If you are interested in attending please follow the link below to fill out our registration form. If you have already signed up for a previous session, let us know via phone or email if you would like to attend.



[Click here to go to our Figure Drawing Page](#)

Up Next at the Eg2 Pop-Up Gallery:

CITYPLACE

## CityPlace Pop-Up Gallery Hours

Monday - Friday, 4:00-7:00pm

Saturday, 4:00-8:00pm

Sunday, 3:00-6:00pm

[For More Hours of Operation Please Click Here](#)



## Volunteers Always Needed!

Eg2 is always seeking volunteers to help us get ready for upcoming programs. Tasks will include helping out with classes, setting up exhibitions, and other odds and ends we just don't have time to complete. Volunteers must give at least a days notice before coming in, so we can plan accordingly.

[Click here to Volunteer at Eg2](#)



## Like what you see?

If you love our work then tell the world! Stories about us from people like you will help us make an even bigger impact in our community. GreatNonprofits - the #1 source of nonprofit stories and feedback - is honoring highly regarded nonprofits with their 2017 Top-Rated List. Won't you help us raise visibility for our work by posting a brief story

of your experience with us? All content will be visible to potential donors and volunteers. It's easy and only takes 3 minutes! Go here to get started!

[Click Here to help us out](#)

Educational Gallery Group | (561) 355-5276 | [Contact Us](#) | [Egsquared.org](#)

## What is the Background Image?

*Map by Jasper Johns, 1961.*

Currently at The Museum of Modern Art, New York. Flags, maps, targets, stenciled words and numbers were themes used by Johns in the 1960s.





"Bringing Creativity to the Community"

## August Newsletter



### Upcoming Events and Programs...

#### Figure Drawing

Clothed Session (all ages)  
Friday, Aug. 25 at CityPlace

Nude Session (18+ Only)  
Friday, Sep. 01 at our Main Location

The cost is \$15 which includes the model fee and all supplies. If you are interested in attending please follow the link below to fill out our registration form. If you have already signed up for a previous session there is no need to fill out another waiver, just let us know via phone or email if you would like to attend.



[Click here to go to our Figure Drawing Page for More Information](#)

#### Audition Prep Series

Get ready for this years audition process for middle and high school! We are offering a variety of options for all schedules:

**Audition Prep Course \$200 (5 classes)**

Wednesdays 4-6pm, Oct. 18 to Nov. 15

**Audition Prep Intensive \$150 (single session)**

Saturdays 9-1pm, Nov. 4, 18 or Dec. 9

**Mock Auditions for Time Management \$40 (per session)**

Thursday Jan. 4 and Friday Jan 5

10am-12pm (Middle School) 12:30-2:30pm (High School)

*Middle School Prep is open to students in 4th-7th grade, High School Prep is open to students in 7th-10th grade. Price includes registration and supplies.*

**[For More Information About Audition Prep Click Here](#)**

## 2018 Scholastic Art & Writing Awards

Submissions will open on September 13, 2017.

The Scholastic Art & Writing Awards are the nation's longest-running and most prestigious recognition program for creative teens in grades 7-12. Eg2 is the affiliate for the Palm Beach Art Region and we encourage EVERY student in grades 7-12 attending public, charter, private or homeschooled programs to submit their artwork created on or after January 1st, 2017. This is an amazing opportunity for student artists to gain recognition, win scholarships and be eligible for countless other opportunities as a Scholastic Awardee.



**[Click here to find out more about the Awards](#)**

## A Look Back....



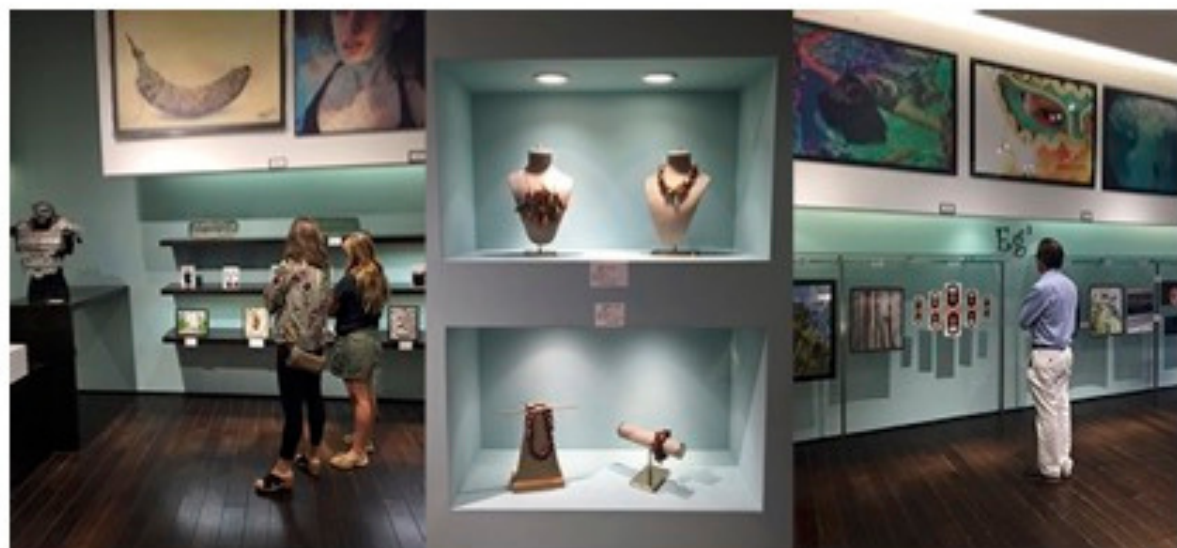
*Students from Sewing Week Posing with their handcrafted stuffed animals and drawstring backpacks*

## Summer Academy Session B

The Eg2 Summer Academy has come to an end and it was awesome having all the smiling faces fill our gallery for the season! During session B, students tackled printmaking techniques, learned how to sew while exploring fashion, and learned all about the creativity put into illustrations. Swing by our [CityPlace Pop-up gallery](#) this month to see some of the amazing works created by our students throughout the whole summer.

*You can follow our [Facebook Page](#) for classes and promotions coming up this fall.*

[For More Information Check Out Our Academy Page](#)



### Eg2 Pop-Up Gallery @ CityPlace

We have moved from our previous storefront in CityPlace to our newest Gallery location next to H&M! Come by see our current exhibition featuring artwork from Eg2 Academy students and other Young Artists (including past Scholastic recipients). We have exclusive student prints available for sale and for a \$5.00 donation you can enter our fundraising raffle in order to win one of the large-scale, weather-proof CityPlace prints of YOUR choice - all proceeds raised will go back into the gallery in order to support all of our amazing young artists.

**Hours of Operation:**  
Monday-Friday, 4-7pm  
Saturday, 4-8pm  
Sunday, 3-6pm

[For More Information Check Out Our Gallery Page](#)

**Stay Informed...**

Fall workshops to be announced...



We are currently seeking out new teachers for our Fall workshops. We plan to offer a variety of Friday classes that will focus on different art techniques. If you have any recommendations on what you would like Eg2 to offer please feel free to let us know. Stay tuned in onto our website and Facebook page for more updates and information.

[For More Information About Our Academy Click Here](#)

**Gallery will be CLOSED on the following dates:**

**Monday, September 04 (Labor Day)**  
*(Pop-Up Gallery and Main location will be closed)*

**Thursday, November 16**  
**Thursday, November 23 - 26 (Thanksgiving)**  
*(Main location will be closed)*

**Main Gallery Hours**

**Monday - Friday, 9:00am - 5:00pm**  
**Saturday - Sunday, Closed**

**CityPlace Pop-Up Gallery Hours**

**Monday - Friday, 4:00-7:00pm**  
**Saturday, 4:00-8:00pm**  
**Sunday, 3:00-6:00pm**

[For More Hours of Operation Please Click Here](#)

**Want to make a difference?**



Help us help our young artists by supporting our cause, sponsoring an upcoming program or donating items in need. Everything that we do here at Eg2 is for the kids and our surrounding community and without the help of supporters like you, none of this would be possible!

[Click Here to Find out how YOU can help](#)



**Volunteers Always Needed!**

Eg2 is always seeking volunteers to help us get ready for upcoming programs. Tasks will include helping out with classes, setting up



include helping out with classes, setting up exhibitions, and other odds and ends we just don't have time to complete. Volunteers must give at least a days notice before coming in, so we can plan accordingly.

[Click here to Volunteer at Eg2](#)

### What is the Background Image?

Going and Coming by Norman Rockwell, 1947.

Painting for The Saturday Evening Post cover, August 30, 1947

Oil on canvas: upper canvas, 16 x 31.5 inches; lower canvas, 16 x 31.5 inches

Currently in the Norman Rockwell Museum Collection

Educational Gallery Group | (561) 355-5276 | [Contact Us](#) | [Egsquared.org](#)

